



project
PARORE



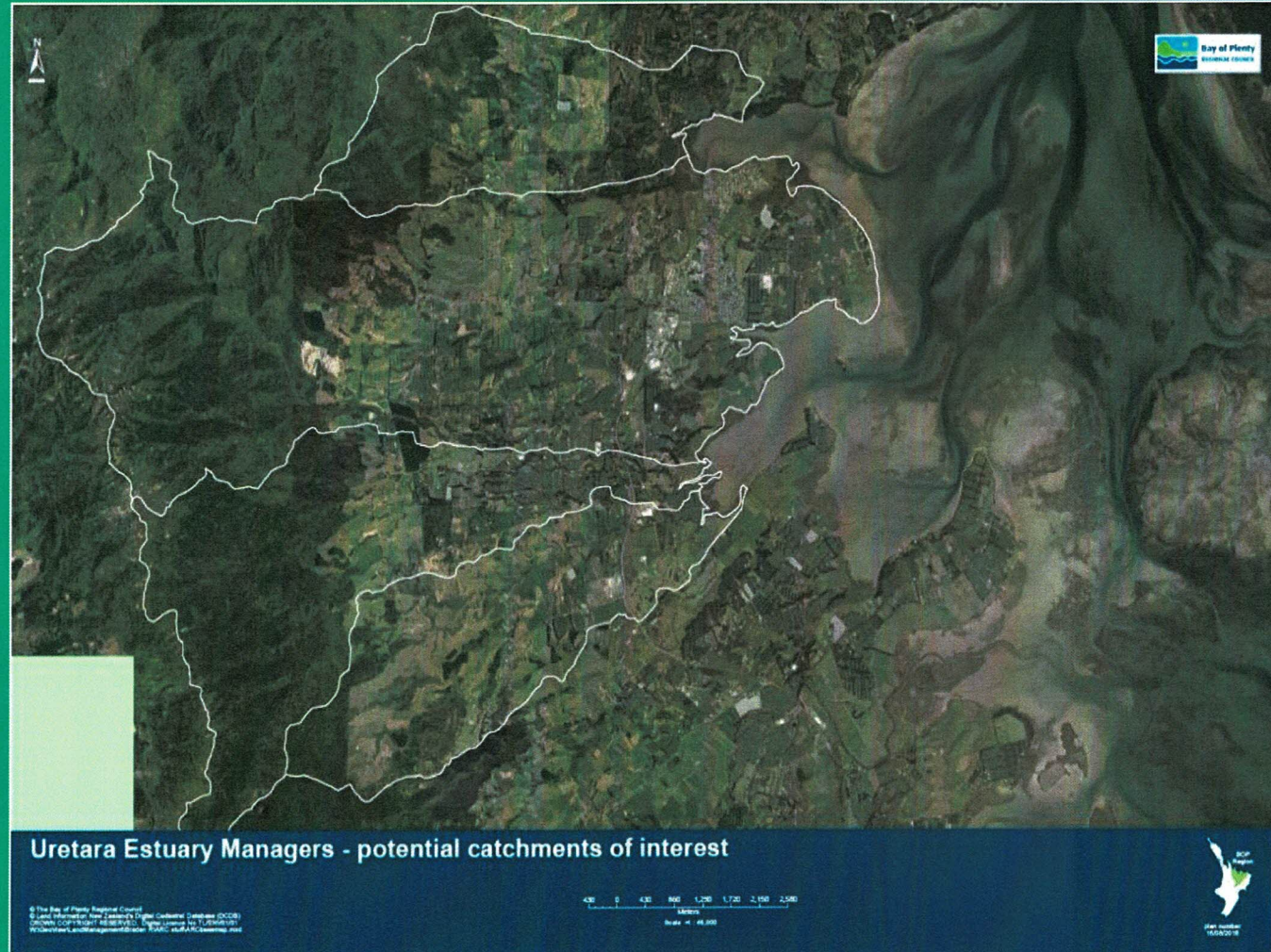
Te Mania Catchment
*Community-led ecological
restoration & water quality
improvement*

The Te Mania Catchment



Project Parore

***Katikati
community
project under
Uretara
Estuary
Managers
(UEM)
covering 4
catchments:
Tahawai,
Uretara,
Rereatukahia
& Te Mania***



Starting Point: Te Mania Catchment

1,300 hectares: small but steep

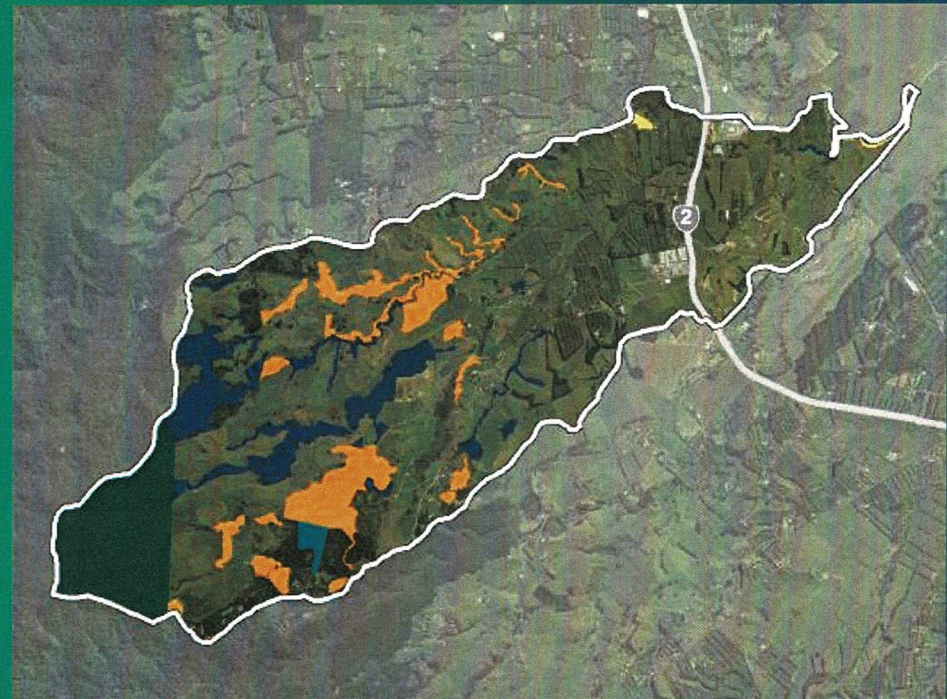
28 km of stream margins

1.7 km of harbour margin

Versatile but erosion prone volcanic soils

Interesting & diverse land use: commercial, residential, recreational

Very mixed primary sector.

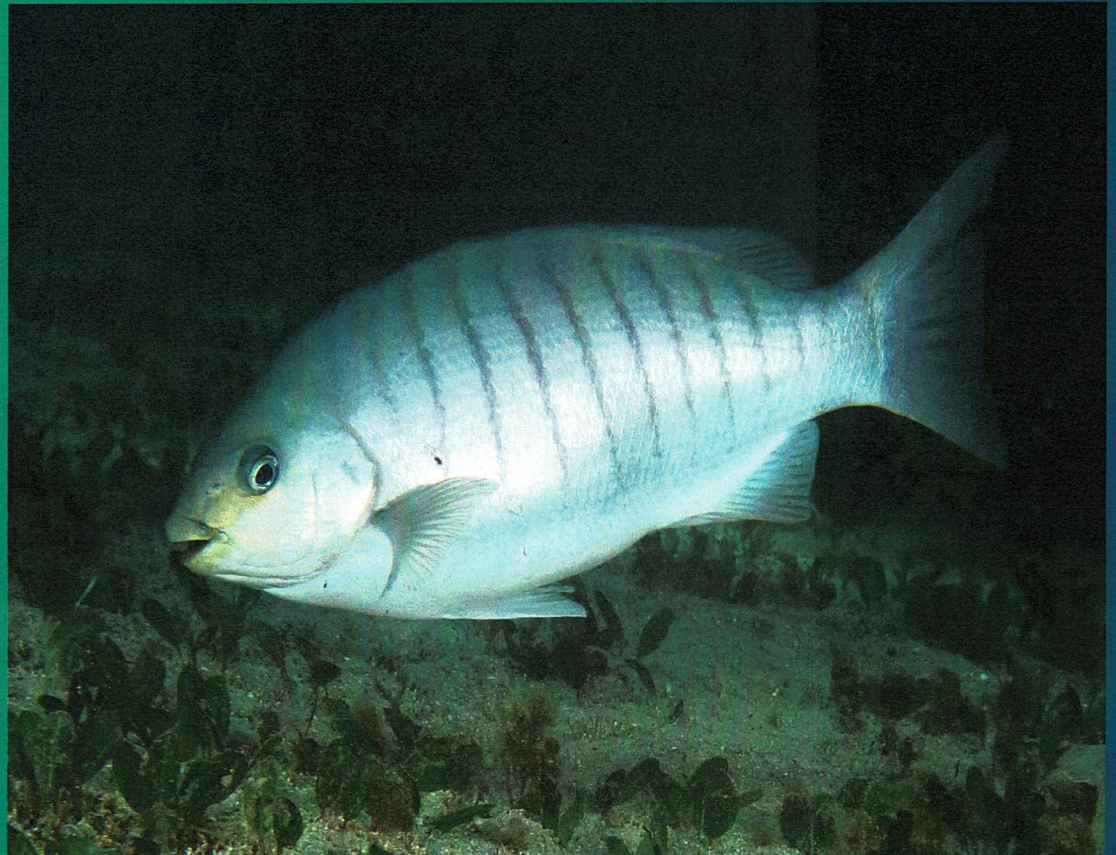


OUR COMMUNITY FOCUS IS THE PARORE FISH!

- ↑ *Native herbivore fish, also know as black bream*
- ↑ *Was previously abundant*
- ↑ *Habitat degradation has lead to decline*
- ↑ *The result being a proliforation of algae & sea lettuce in the Tga harbour.*

The vision of success will be the replication of Project Parore across the 17 x Tga Moana Sub-atchments

And ultimately the restoration of the Parore's habitat.

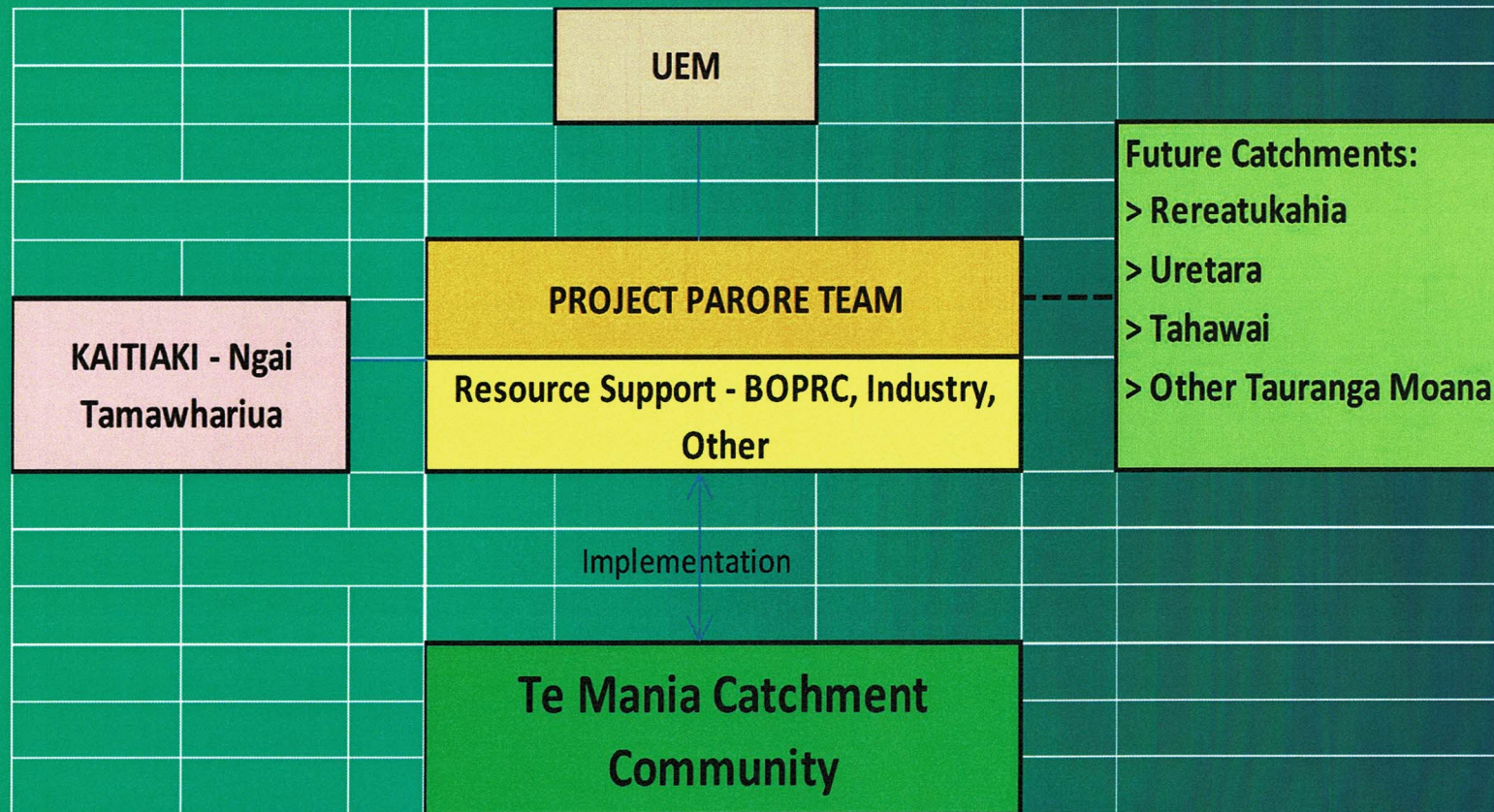


1st phase of Project PARORE:

Development of Entity Relationships

- *BOPRC introducing the concept of a Sub-catchment initiative to leaders within the community.*
- *Appointment of Iwi as Kaitiaki.*
- *Development of Governance Structure & Budget.*
- *Apply for funding from BOPRC & MfE.*
- *Engagement with Industry - Beef+Lamb, Dairy NZ, Zespri & Avocado NZ.*
- *Signing of Memorandum of Understanding with Industry.*
- **'We are stronger working together'**
- *Development of engagement strategy with the Community.*

Entity relationships



2nd Phase: Environmental Forensics a key step in community engagement!

- *Analysis of 23 sites in the Te Mania catchment.*
- *A health check of natural resources over 2yr period.*
- *Analysis of water quality including nutrient & Macroinvertebrate Community Index (MCI)*
- *Analysis of biodiversity - flora & fauna.*
- *A summary of evidence to present to the community!*



STARTING POINT: COMMUNITY ENGAGEMENT

1st part of engagement was to outline the concept to the community and ask for feedback! Which included:

- *The vision.....WHY!*
- *The process/timeline.*
- *Up and coming workshops identifying the low hanging fruit!*
- *How to get involved in projects already underway!*
- *What land owners could do now to make a difference!*



The Project Vision

- *Te Mania catchment will be a place where people can enjoy an engaged community that cares for and has a sense of pride in the environment in which they live.*
- *Landowners and residents will manage the ecosystems that provide livelihoods in a sustainable way and will collaboratively take action to restore and maintain the health and quality of the catchment's land, water and native wildlife.*

Community Objectives

*Catchment
Focus 1*
Looking after
our soils &
water quality

*Catchment
Focus 2*
Looking after
our natural
areas &
wildlife

*Catchment
Focus 3*
Looking after
our fresh &
saltwater
fishery

THE 2ND PART OF COMMUNITY ENGAGEMENT 2YRS LATER.

2nd part of engagement was to present the summary of findings from the Environmental Forensics.

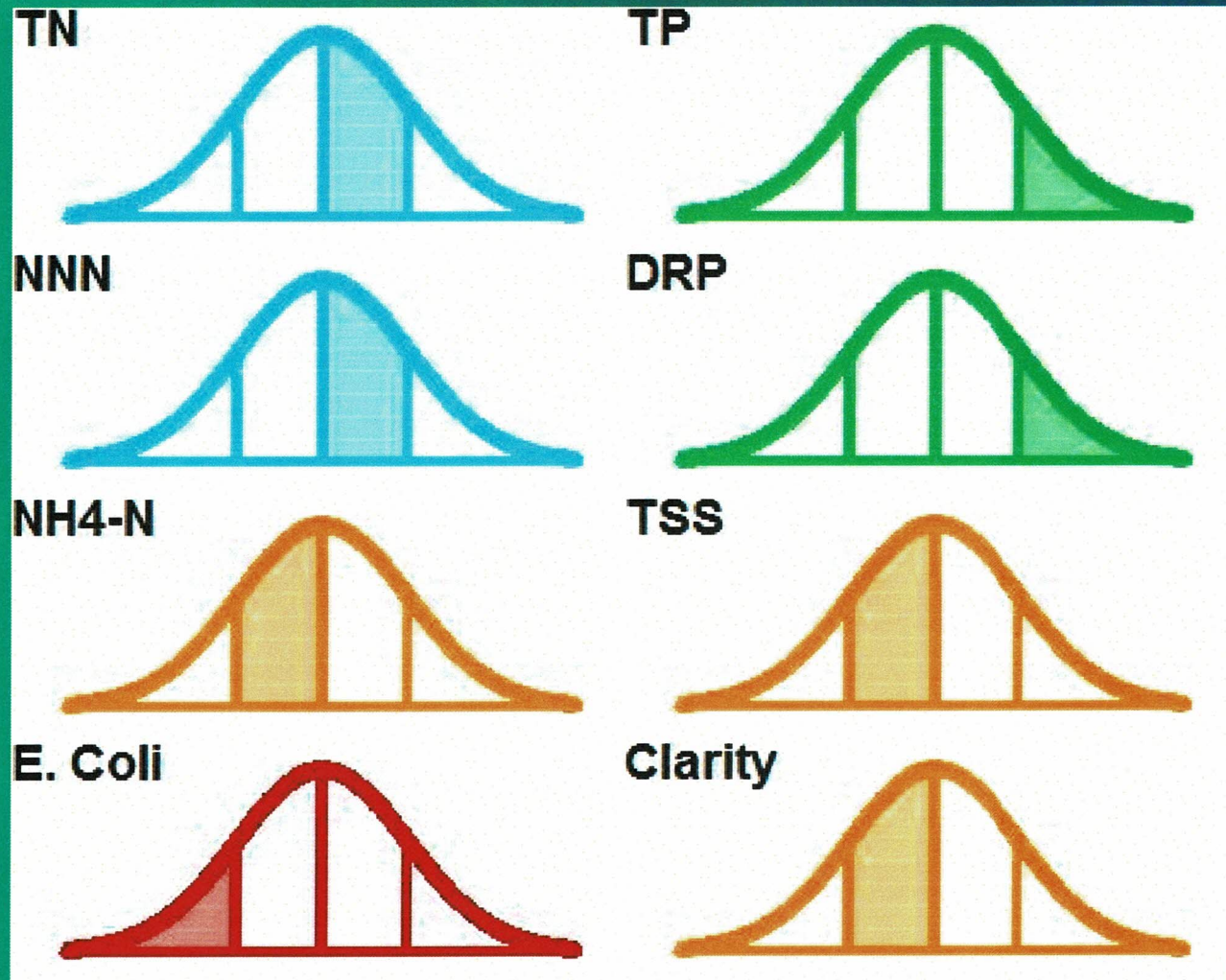
- *Presenting the hard evidence of environmental issues..... 'The WHY'!*
- *Talking about HOW we as a community can take responsibility of the issues of our properties.*
- *'TEAM' approach pan sector outlining the tools available LEP/FEP to get started!*

A commitment from the community, we can do this!



Water Quality Issues

1. **Bacteria**
E.coli
2. **Sediment**
soil erosion
3. **Nutrient**
ammonia, nitrate, phosphorous

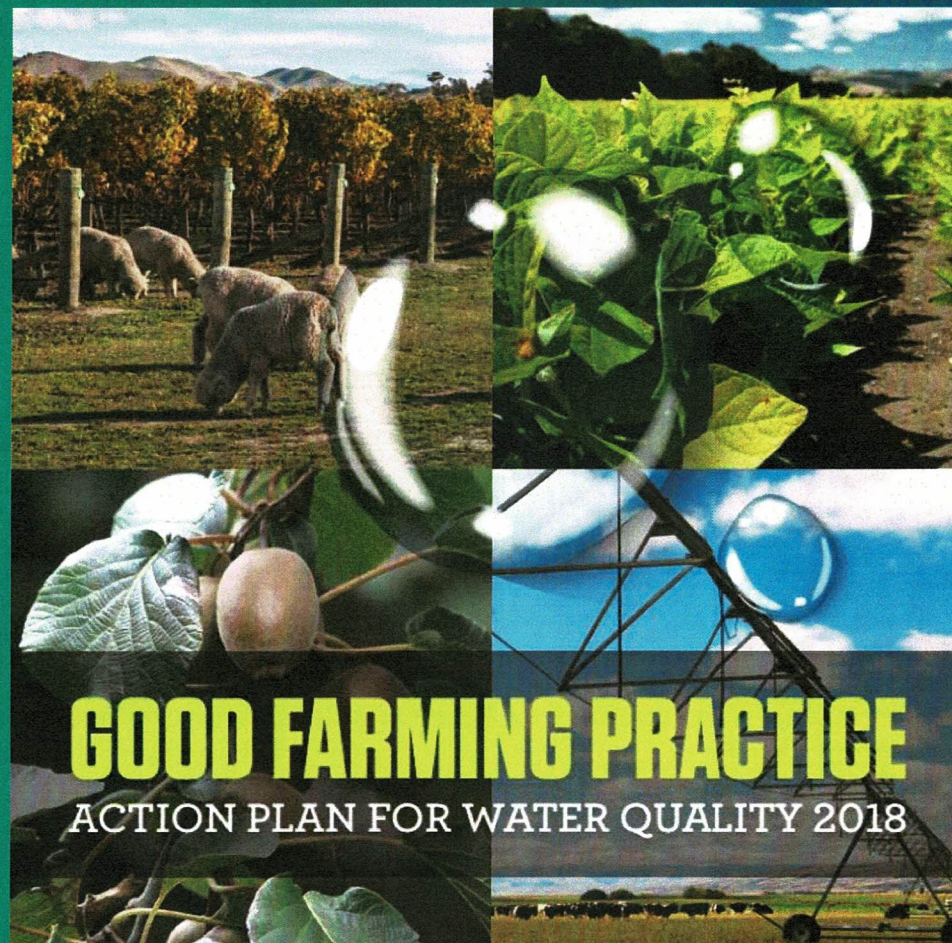


TOOLS TO DRIVE CHANGE:

PAN SECTOR LEP/FEPS

Pan sectors working together alongside the BOPRC to:

- *Share resources.*
- *Run workshops.*
- *Work with farming leaders.*
- *Identifying high priority areas within the Te Mania catchment.*
- *Helping land owners identify the issues on their own properties.*
- *Helping land owners implement GFP.*
- *Helping land owners with subsidies.*
- *Helping land owners complete their LEP/FEPS and implement works programme.*



SO WHAT'S HAPPENING NOW?

- *The community is super excited!*
- *The community wants to take ownership of its environmental issues!*
- *The community wants to get ahead of the game!*
- *There is interest in Project Parore across the BOP & beyond.*
- *Farming leaders elsewhere are starting similar initiatives.*
- *MfE has provided funding towards Project Parore and along with Central Govt are taking a keen interest in its progress.*
- *Project Parore is a 'bottomup' approach empowering community stakeholders to carry out action on the ground which we believe will have a far more meaningful effect in improving water quality than 'Topdown' regulation.*
- ***In the 1st instance we will go faster with this approach!***



Conclusion:

- *PC1 in its current form will fail to achieve a 'Team' community approach as outlined in Project Parore because of Grandparenting/ offsetting principles.*
- *Grandparenting/offsetting principles has driven an unhealthy wedge between the sectors and needs to be condemned to the scrapeheap.*
- *Hillcountry farmers across the Waikato and NZ have woken up to grandparenting and won't tolerate being the 'whipping boys' to offset someone else's pollution!*
- *The solution to improving water quality is everyone taking equal responsibility for their own issues whether it be farming, urban or industrial.*
- *There is nothing more powerful than a SC community taking ownership of water quality issues within their Rohe as outlined in Project Parore.*
- *All the stakeholders within a SC have the ability to set short term and long term objectives and develop a 'Team' strategy to achieve those objectives alongside Regional Council, setting the guidelines and targets to aim for.*
- ***The BOPRC and Central Government have now recognised that supporting and promoting SC initiatives will create a positive culture of farmers and their communities 'wanting to instead of having to'.***

Thankyou From Rick Burke