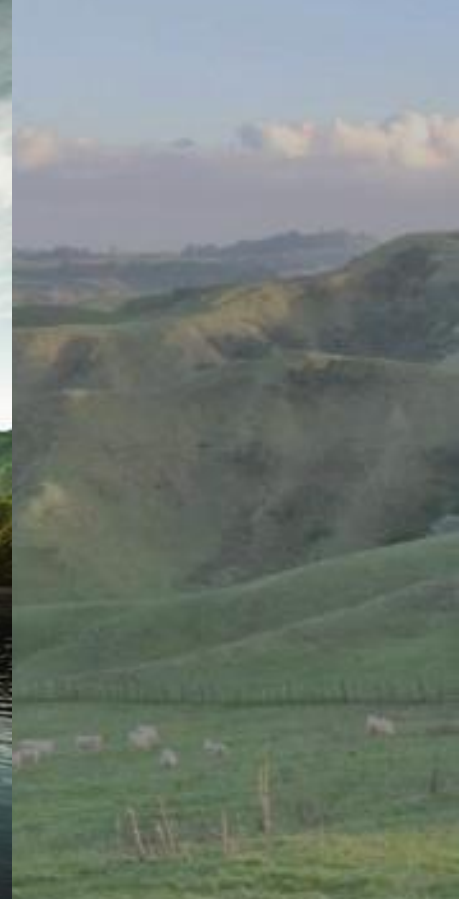
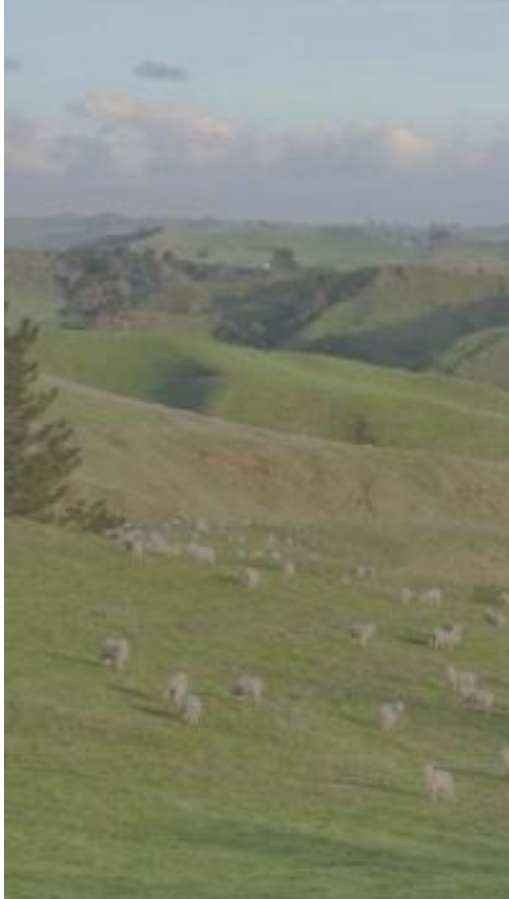


Farmers for Positive Change



Sheep, Deer, Beef-cattle (mixed) Farm Systems

Diverse, Different, Flexible and Complex



Farming Fits the Land

Different Landscapes - Farming Fits the Land

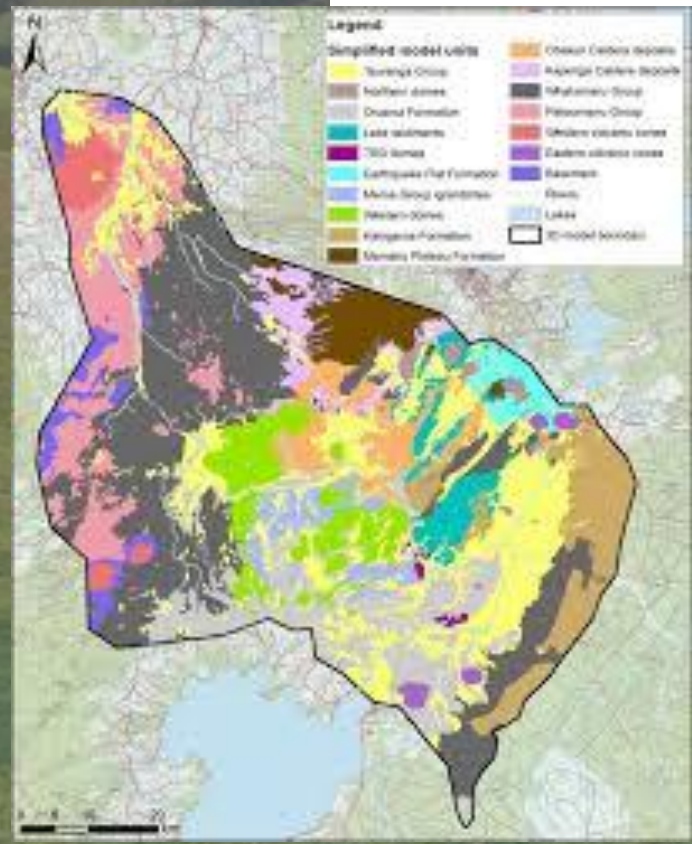
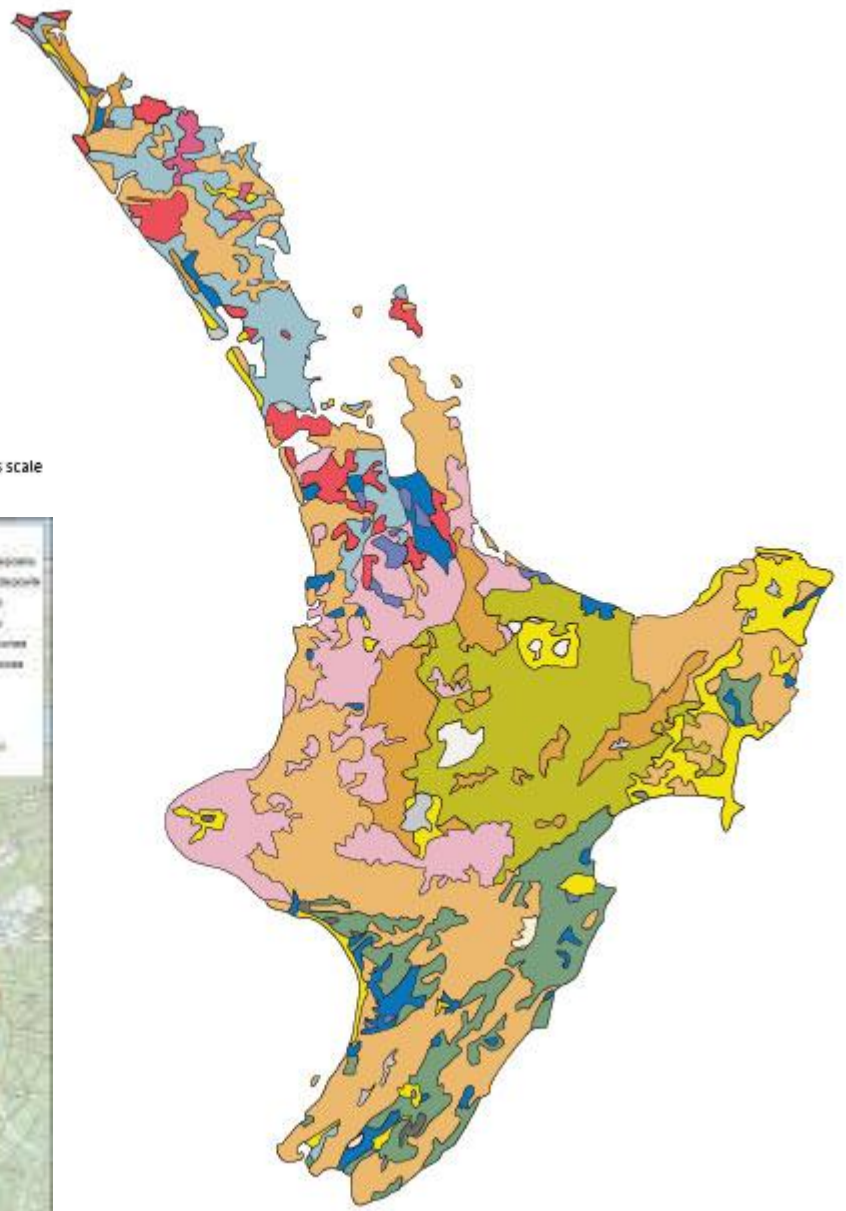
Recognises the versatility and capability of the natural resource and therefore its limitations and constraints

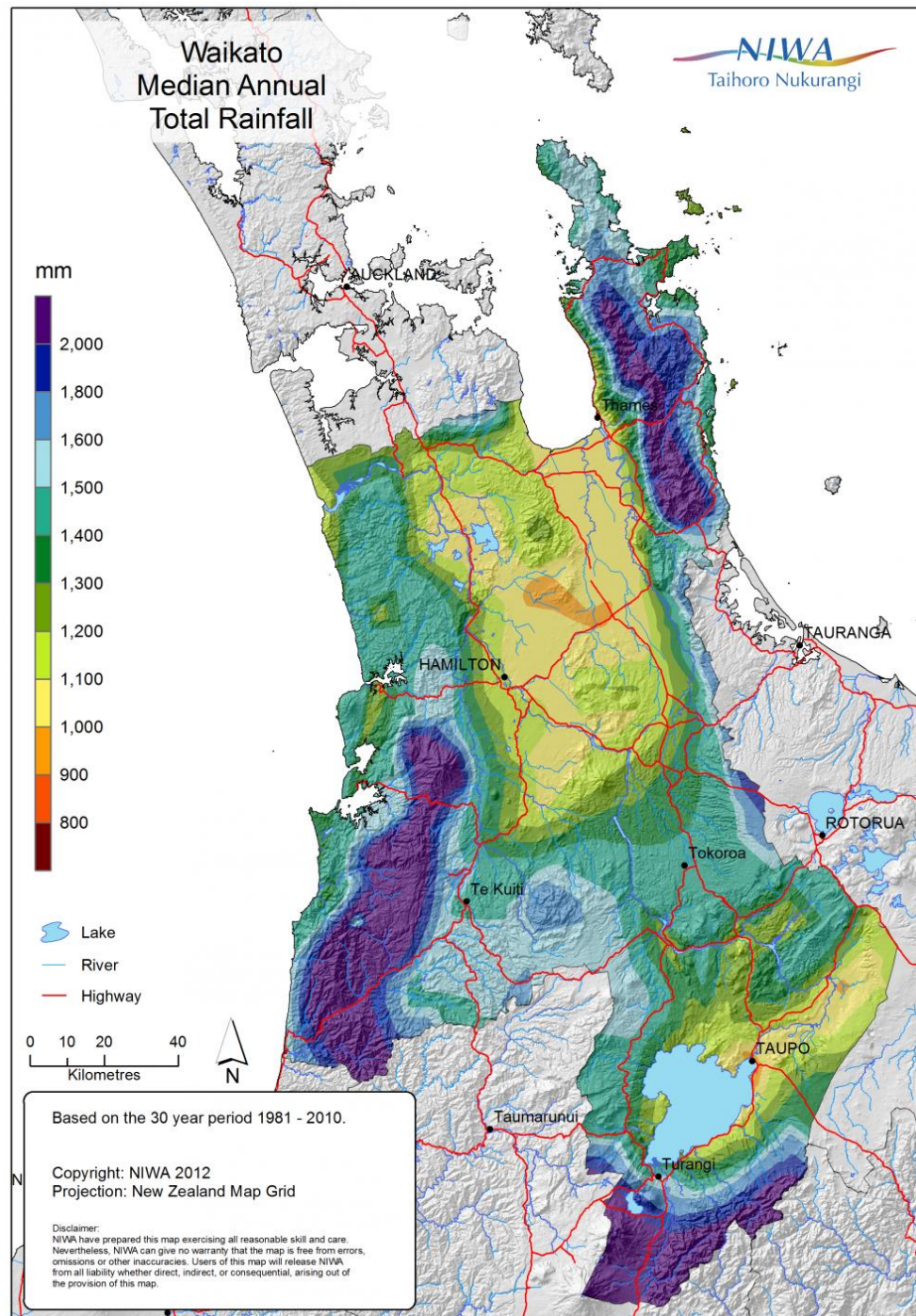


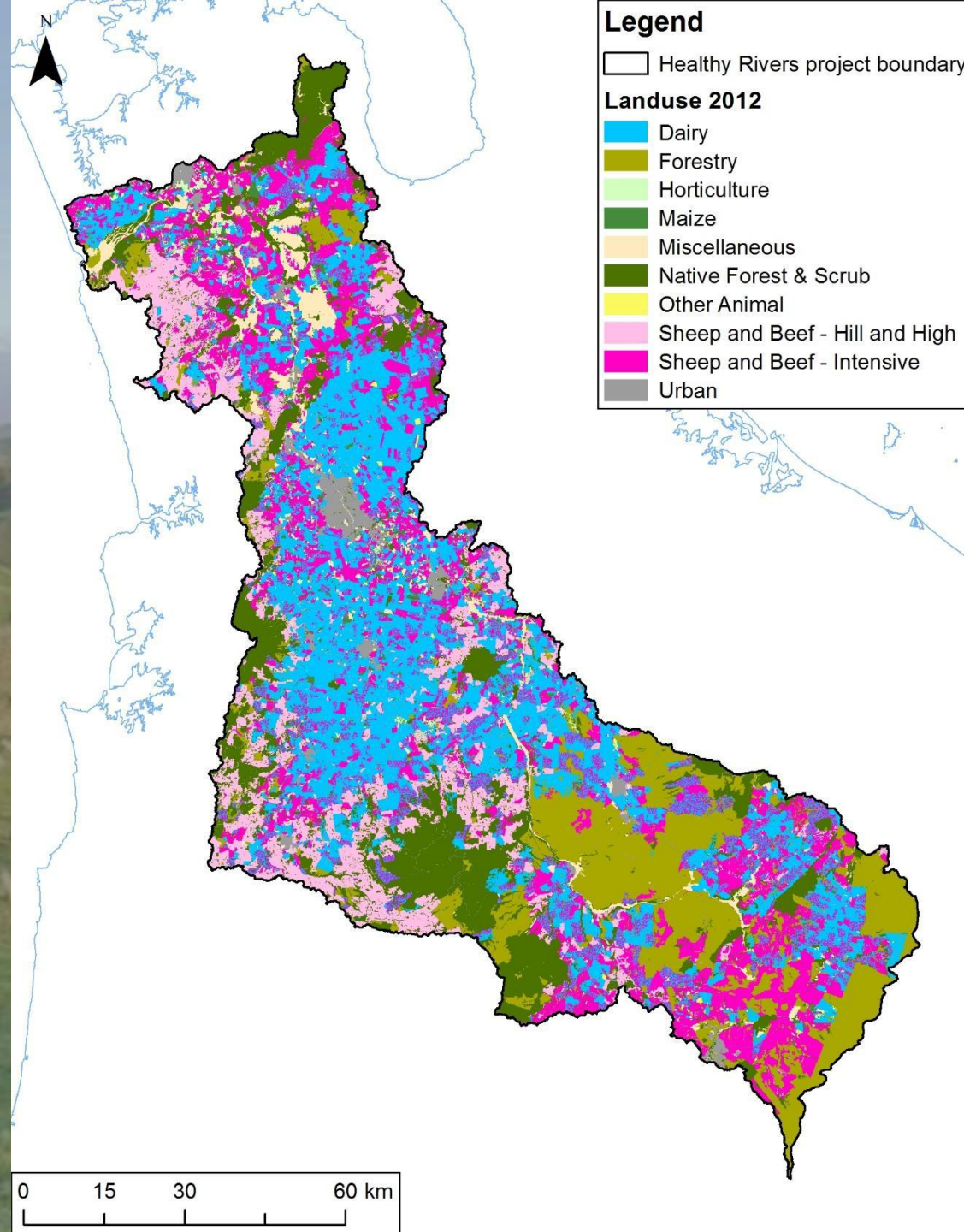
≠



- Allophanic soils
 - Anthropogenic soils
 - Brown soils
 - Brown soils – stony
 - Gley soils
 - Granular soils
 - Melanic soils
 - Organic soils
 - Oxidic soils
 - Pallic soils
 - Podzol soils
 - Pumice soils
 - Raw soils
 - Recent soils
 - Ultic soils
- 1 Areas too small to be shown at this scale







Land use defined by hill country

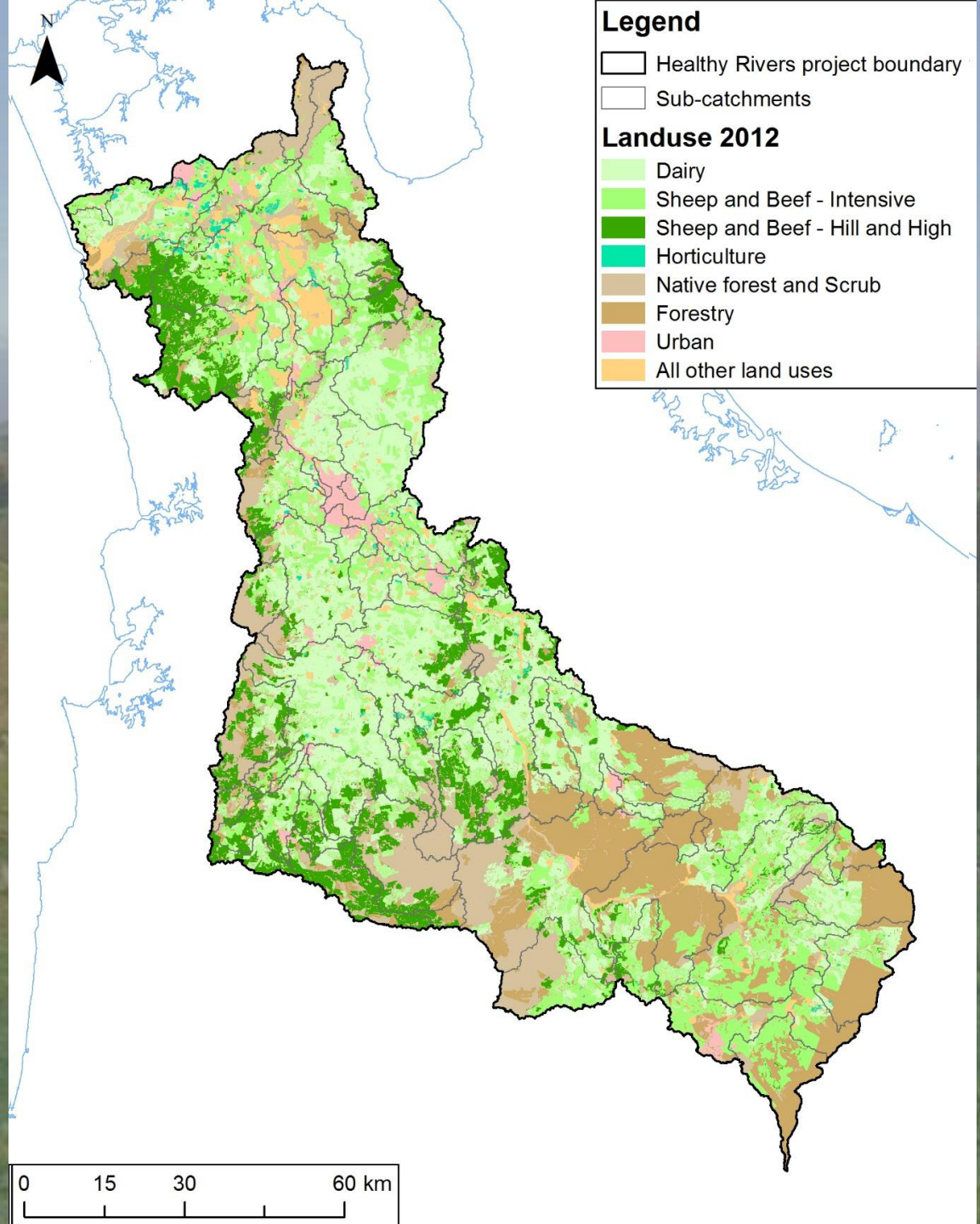


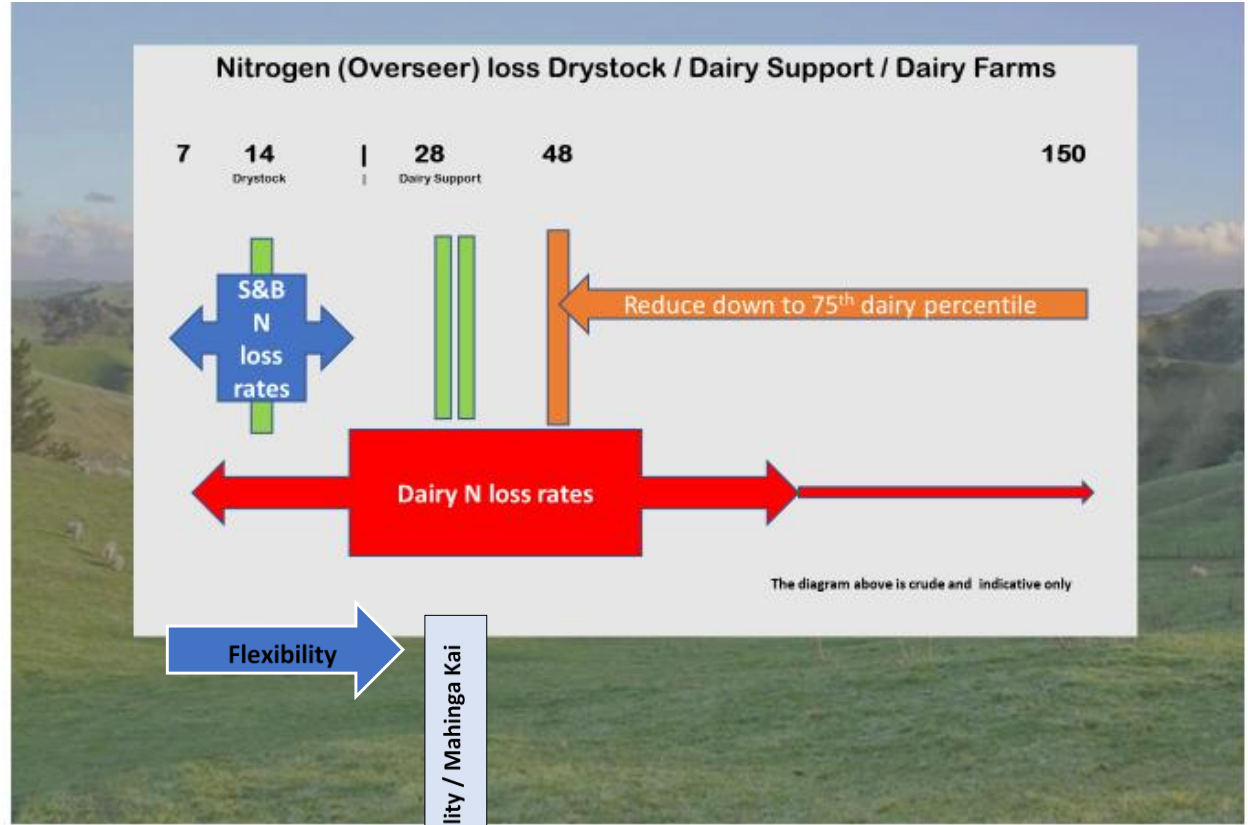
Land use defined by rolling low country



Land use defined by easy flat country







Allowable Nitrogen Loss Rates
Without compromising Ecosystem Health
/ Swimmability / Mahinga Kai

