

CNI Iwi Holdings Ltd

for

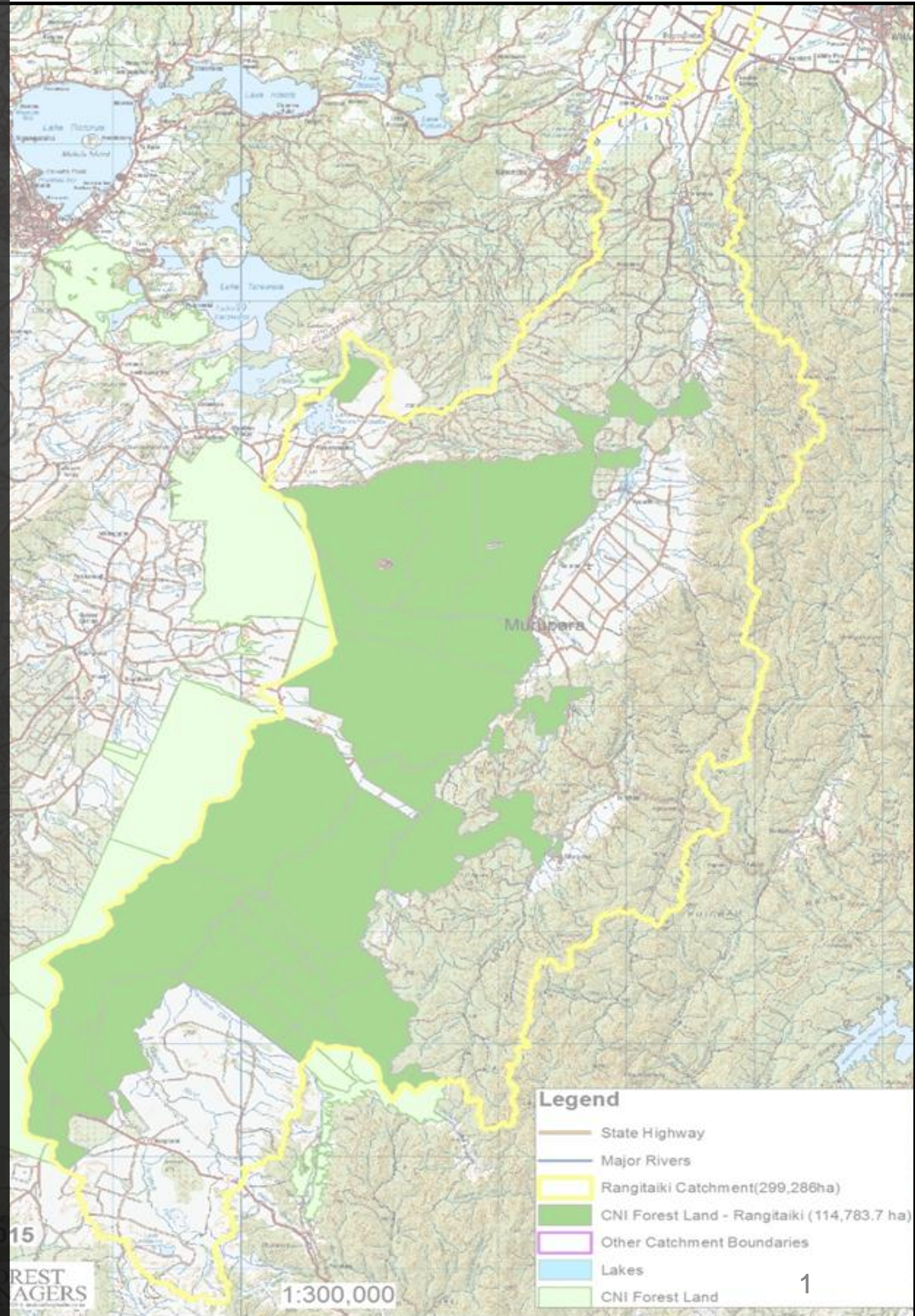
the CNI Iwi Collective

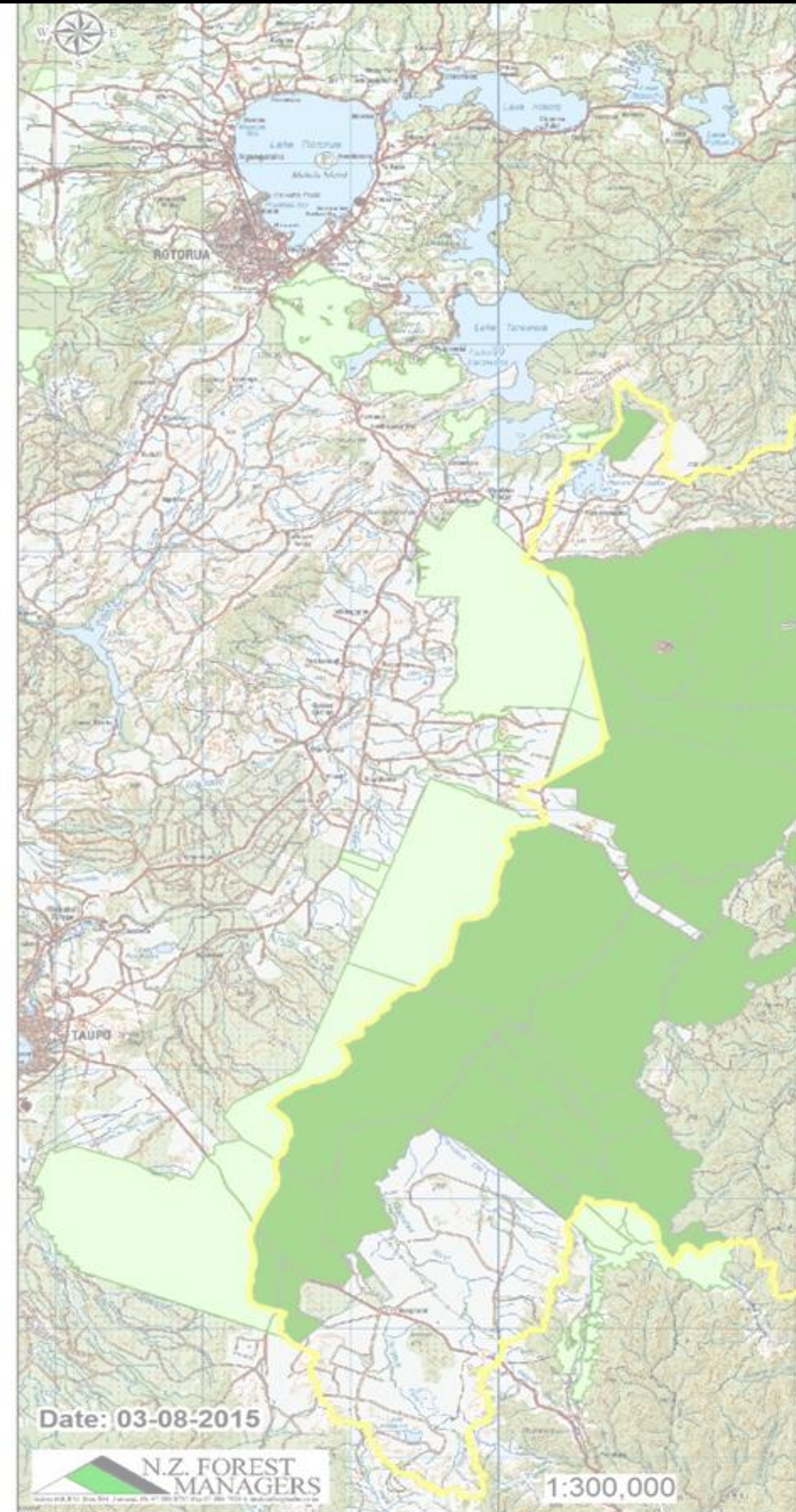
Waikato Plan Change One
Part 1 - Objectives

CNI Iwi Holdings Limited

Date: 03-08-2015

N.Z. FOREST MANAGERS





CNI Iwi Holdings Ltd

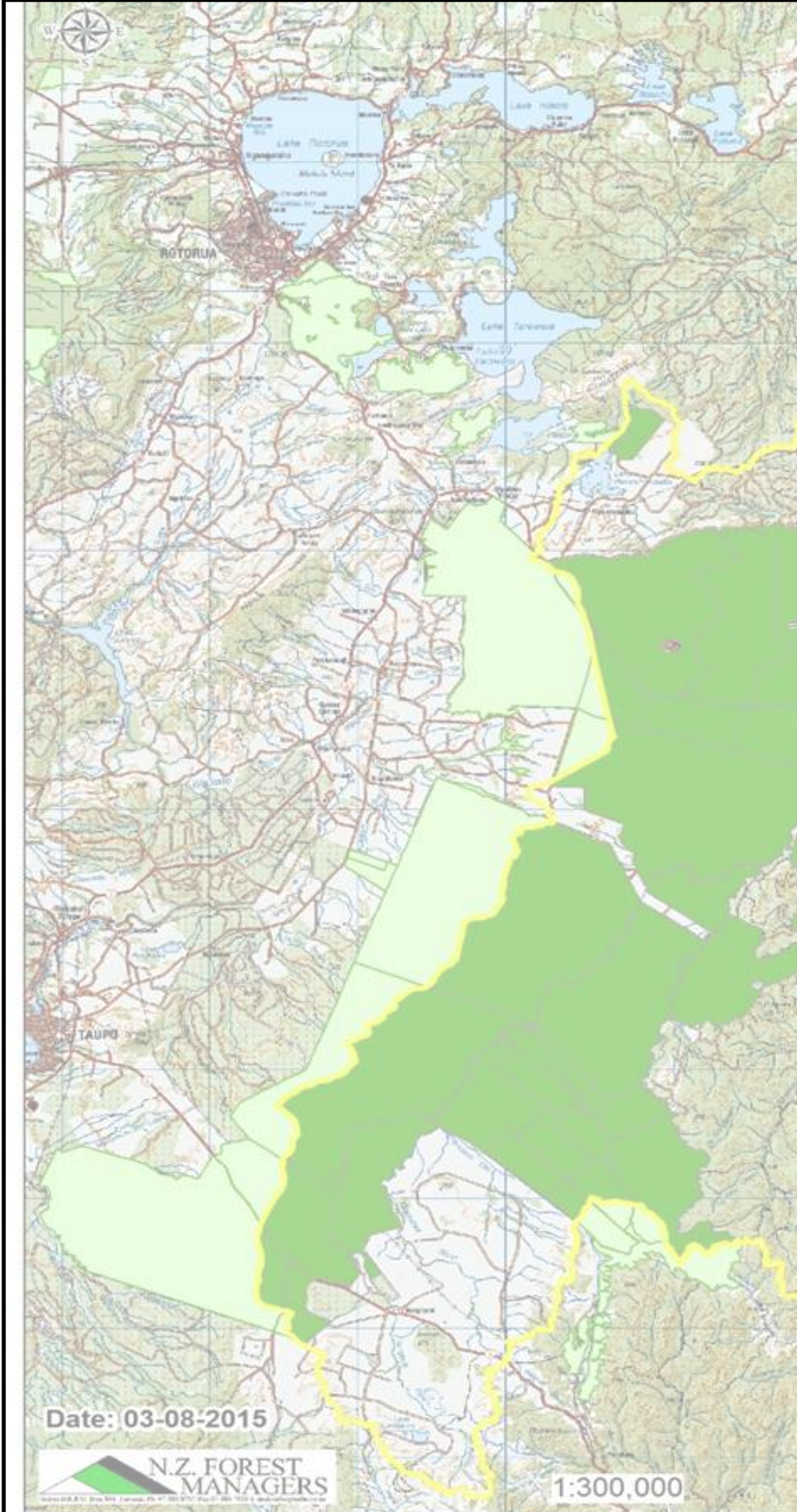
CNIHL holds and manages the land until 2043

Governed by a 16 Director Board (2 directors per Iwi)

Land management by wholly owned subsidiary
CNI Iwi Land Management Ltd

Legend

- State Highway
- Major Rivers
- Rangitiki Catchment(299,286ha)
- CNI Forest Land - Rangitiki (114,783.7 ha)
- Other Catchment Boundaries
- Lakes
- CNI Forest Land



- **1900's** land acquired illegally by the Crown
- **1980's – 2005** Crown and Iwi unsuccessful in settlement discussions
- **2005** Iwi collective approach successful
- **2008** CNI 8 Iwi Collective Deed of Settlement signed
- **June 2009** received 176,000 Ha of which $\approx 34,000$ Ha in the Waikato

Legend

Lakes
CNI Forest Land

The People

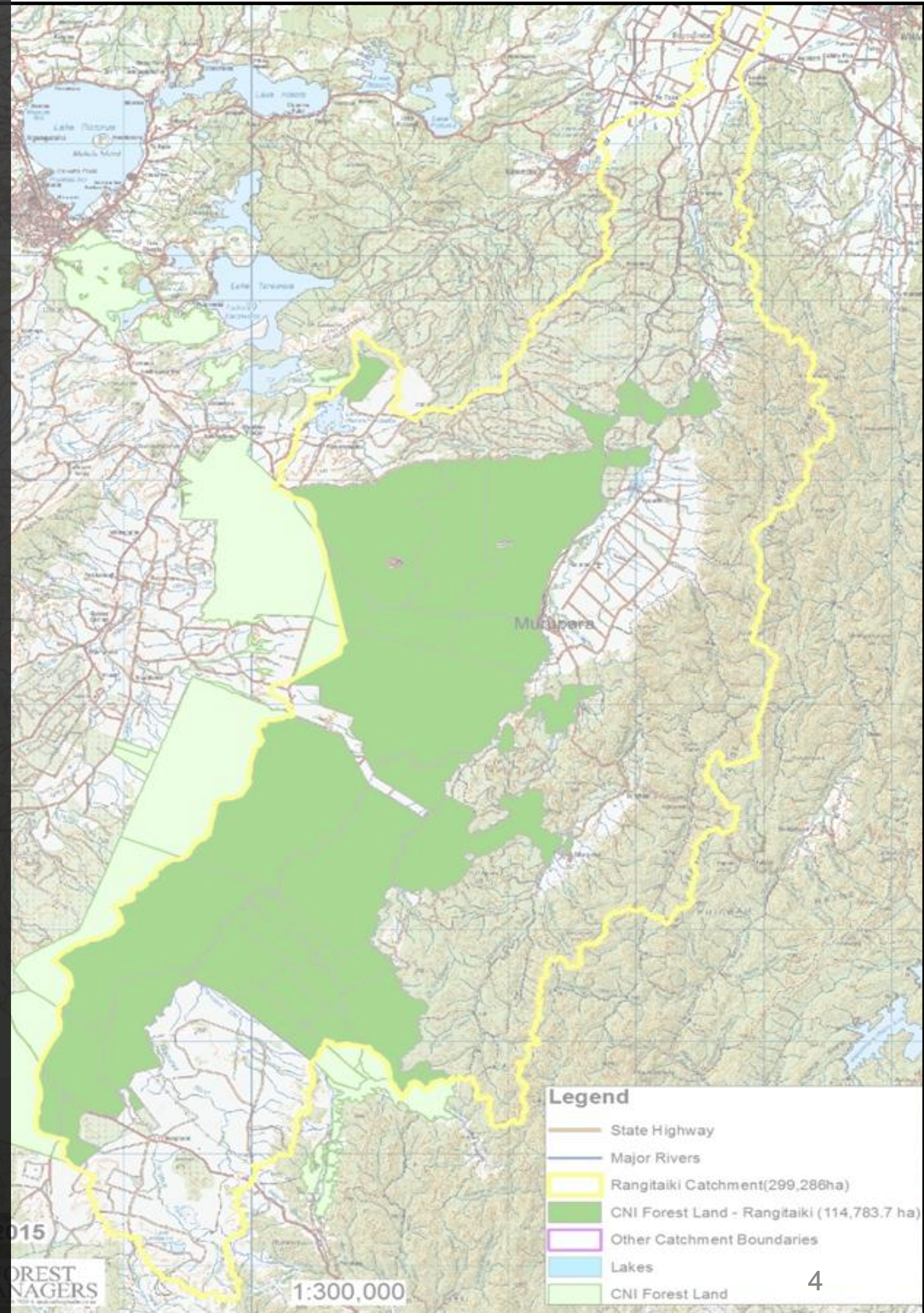
Ngāti Whare
Ngāti Manawa
Ngai Tūhoe
Ngāti Tūwharetoa
Ngāti Rangitihi
Te Pumautanga o Te Arawa
Raukawa
Ngāti Whakaue

Collectively > 110,000
people

CNI Iwi Holdings Limited

Date: 03-08-2015

N.Z. FOREST
MANAGERS



Aspirations

To increase wealth by operating a successful commercial business, respectful of tikanga and the environment

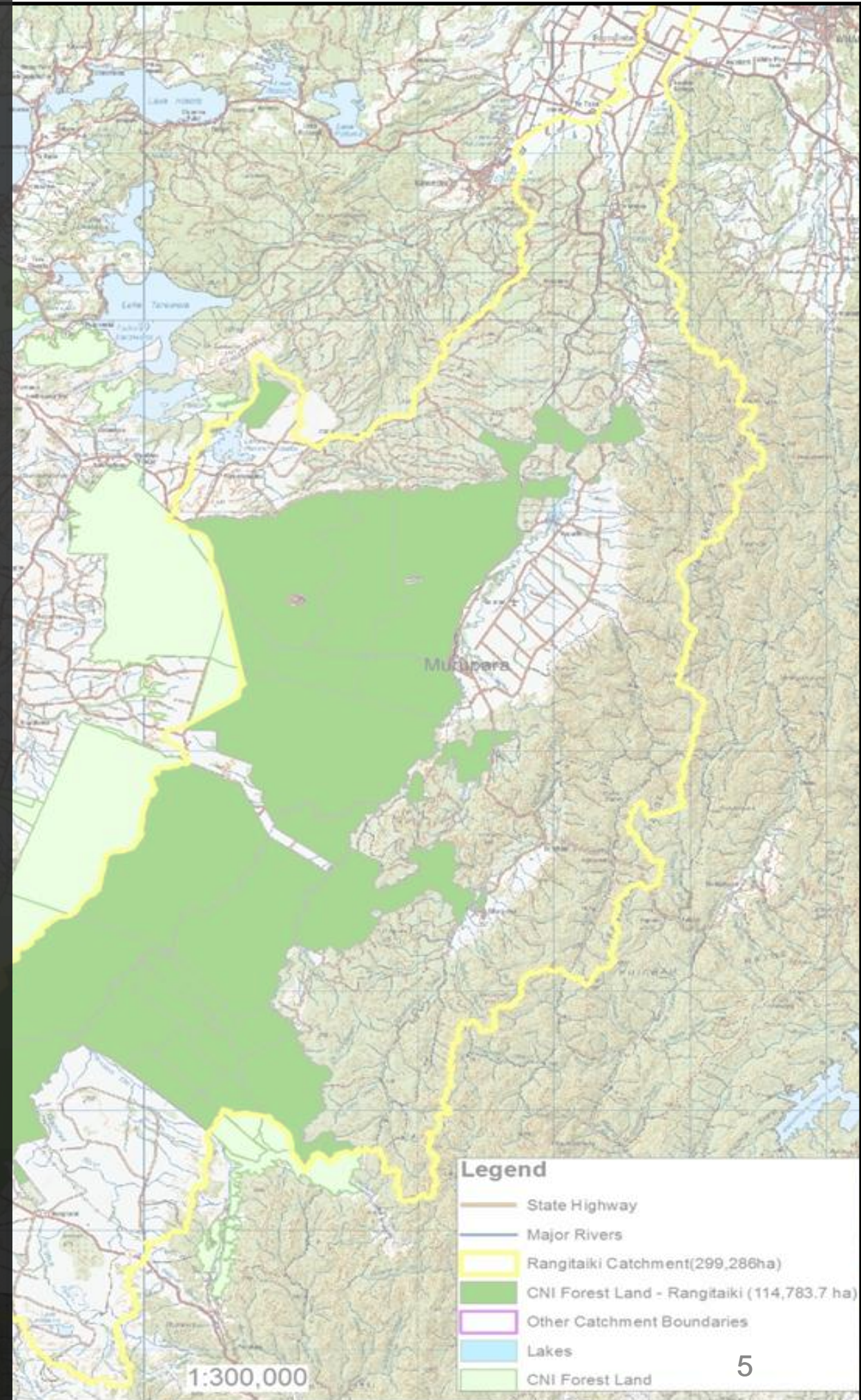
To manage the land and opportunities for current and future generations.

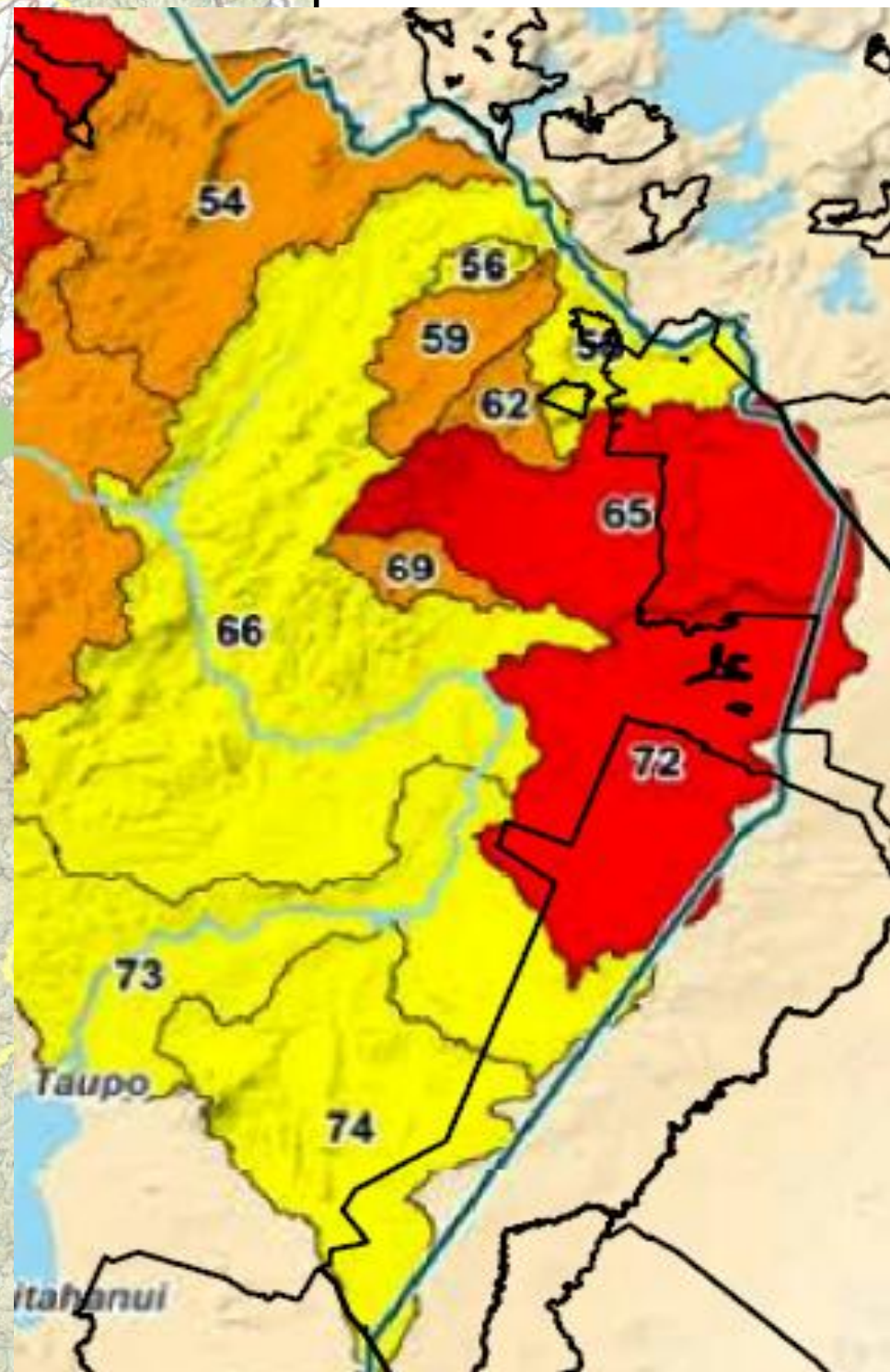
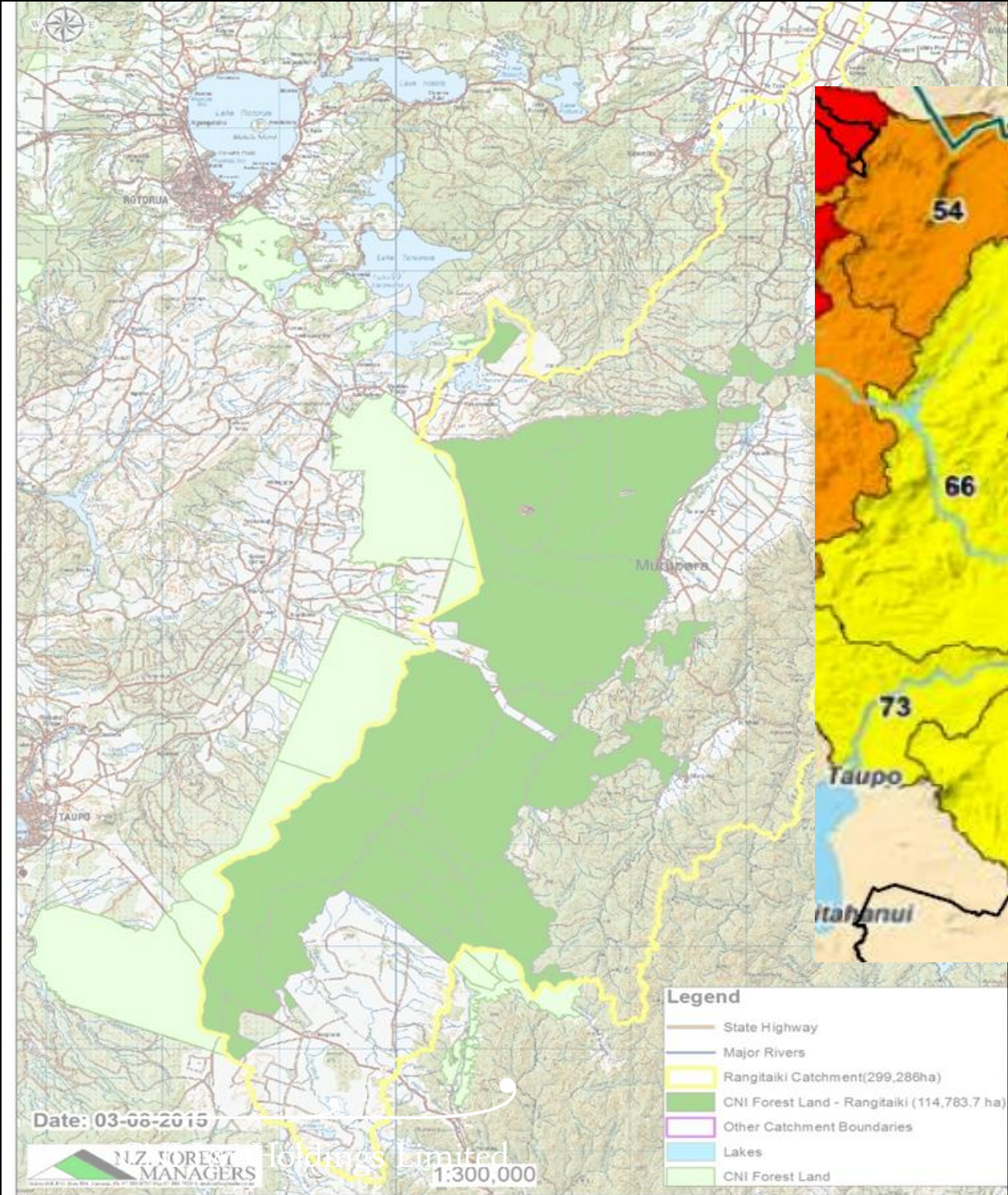
Deliver intergenerational assets and income

CNI Iwi Holdings Limited

Date: 03-08-2015

N.Z. FOREST MANAGERS





Crown Forest Licenses for up to 35 years

For wealth creation and stability

need to:

1. unlock the potential of the land
2. retain access to the resources to be able to use it =
 - Carbon
 - Water
 - Nutrients

