

Protecting the significant values of Whangamarino wetland





Wetlands and outstanding freshwater bodies in the NPS-FW

Objective A2 (water quality):

- The overall quality of fresh water within a region is maintained or improved while:
 - a) protecting the significant values of outstanding freshwater bodies;
 - b) protecting the significant values of wetlands; and
 - c) improving the quality of fresh water in water bodies that have been degraded by human activities to the point of being over-allocated.

Objective B4 (water quantity):

- To protect significant values of wetlands and of outstanding freshwater bodies.

Significant values of wetlands

“... a wetland may have a significant value related to native biodiversity, fisheries, geomorphology, culture, science, recreation, landscape, water yield regulation, denitrification, or water purification).

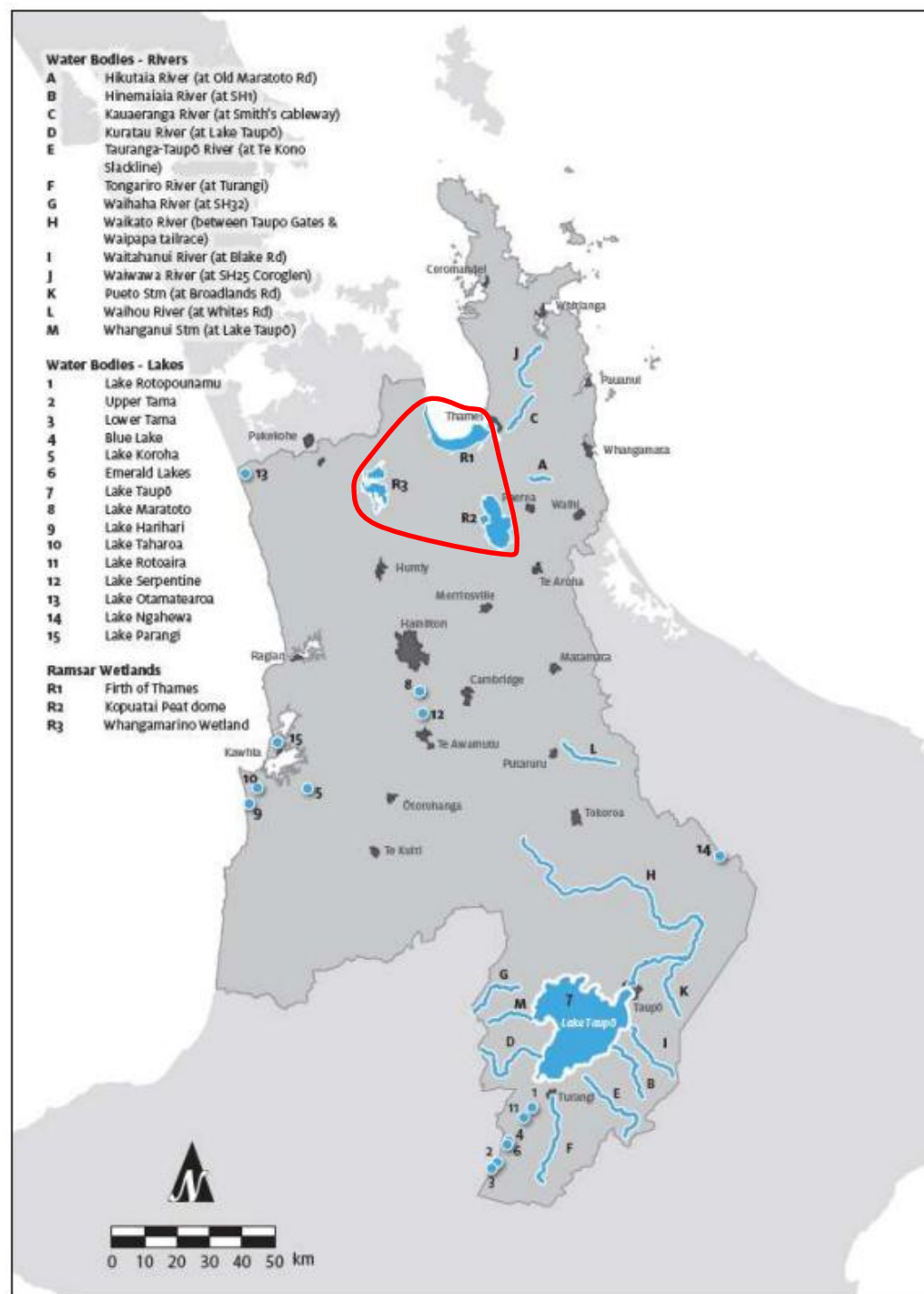
Any conflicts between protection measures for different values will need to be resolved.”

MfE 2015: A Guide to the NPS-FW 2014



Waikato RPS

Freshwater bodies and wetlands to be included in the identification of OFWBs and significant values of wetlands (Method 8.2.1)



Significant values of Whangamarino Wetland

- Includes the spectrum of wetland types
 - marsh, swamp, fen, bog
- Degradation of high value ecosystem types



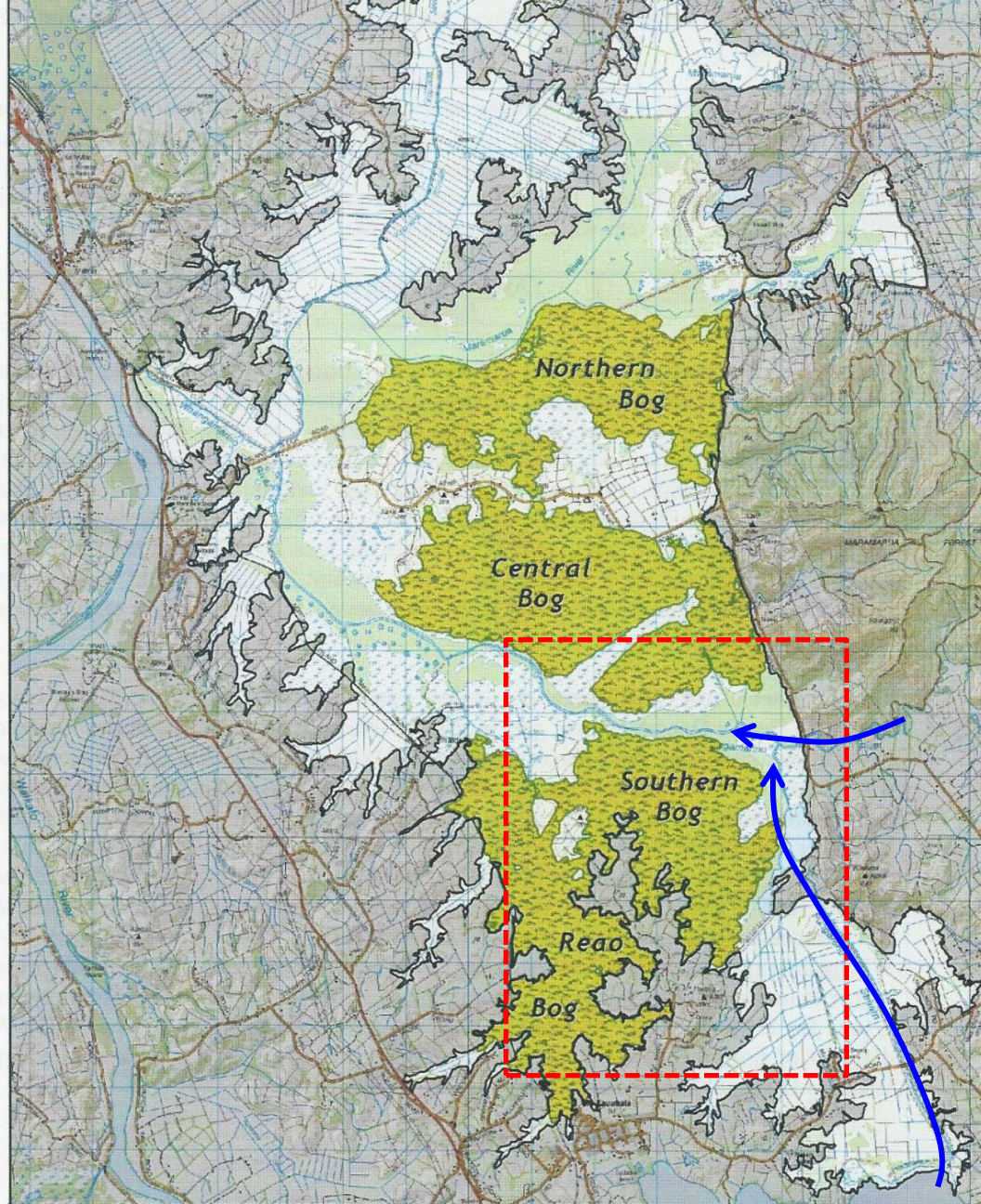
Whangamarino bog vegetation



Corybas carsei

Reduction in high-value ecosystems

- 1942 bog extent



Data Acknowledgment
Vegetation data from Paula Reeves (1994), NZTopo Map. Crown Copyright Reserved
Report: 2746
Client: Wildlands GIS
Ref: 08/0019
Path: E:\gis\Whangamarino\Gis\mxd
File: Figure_BogExtent.mxd

Figure 3: The location and extent of bogs in Whangamarino Wetland in 1942

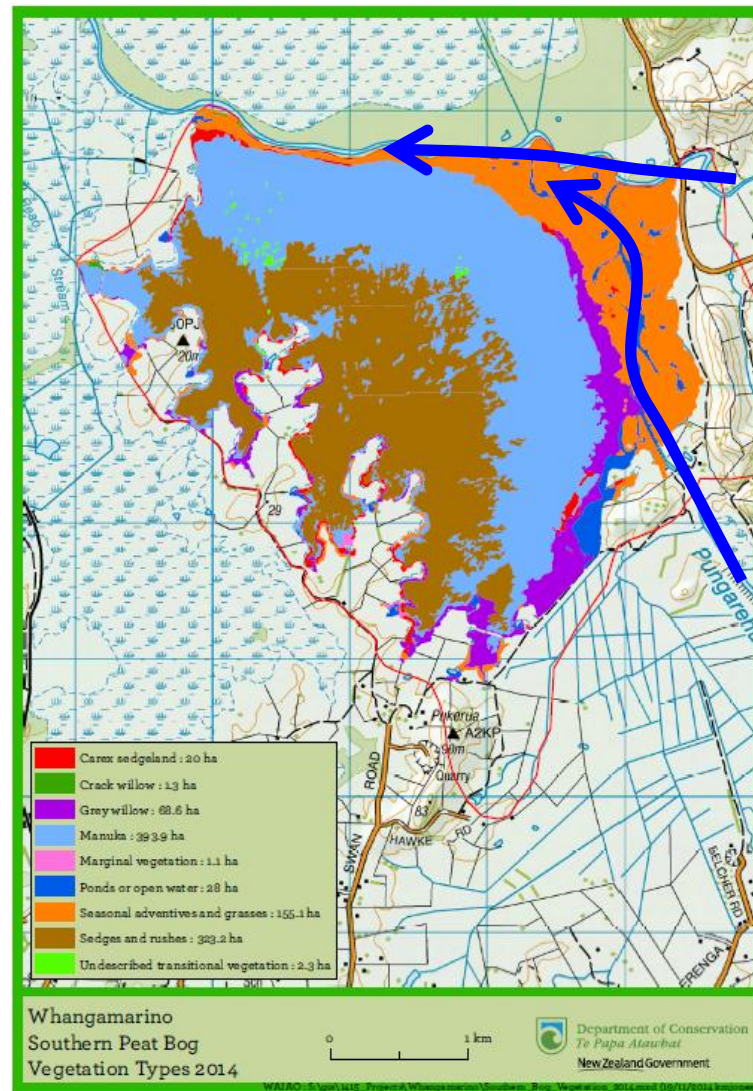
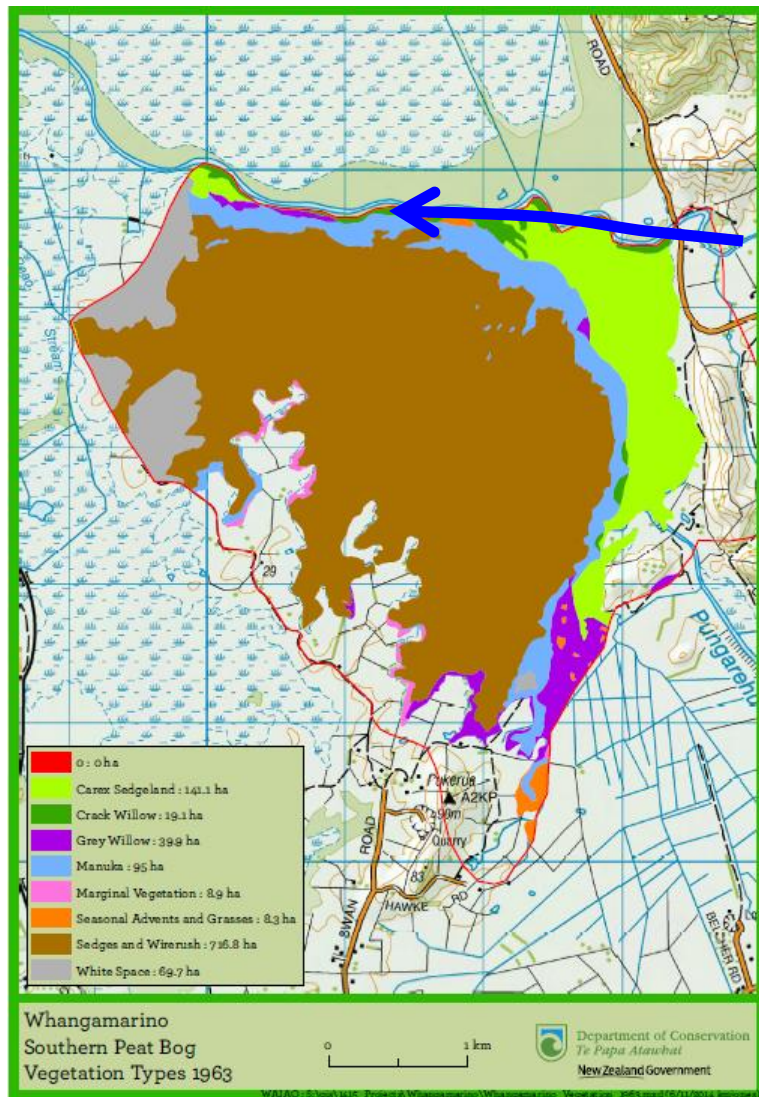


Wildlands
www.wildlands.co.nz, 0508 WILDNZ
Scale: 1:85,000
Date: 28/09/2011
Cartographer: FM
Format: A4

Reduction in high-value ecosystem extent

1963

2014



Why a wetland FMU?

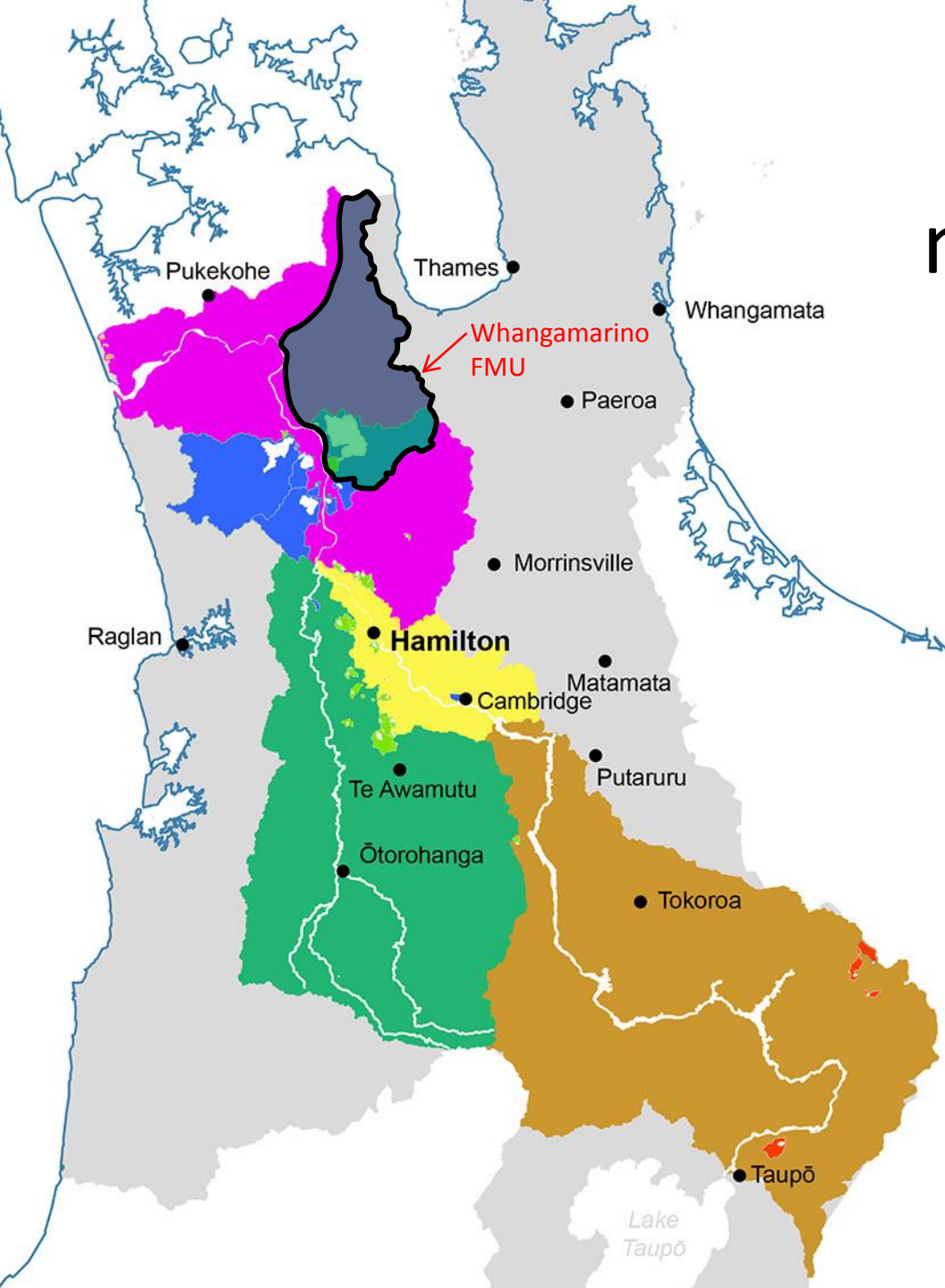
- Apply “lake FMU” logic
- “Significant values of wetlands” importance in NPS-FW
- International Ramsar status
- Likely OFWB status
- Unlikely to gain the necessary attention if just a component of wider Lower Waikato FMU

How might the wetland FMU be managed differently?

- Contaminant focus – sediment/P
 - Wetland stock exclusion
 - Wider stock exclusion rules in catchment streams
 - Cultivation management rules
- Flood management
 - Suspended sediment reduction targets Lake Waikare
 - Wetland water level limits on Waikare discharge



Freshwater management units



Lakes and rivers

Freshwater Management Units



Upper Waikato



Mid Waikato



Lower Waikato



Waipa



Peat lakes



Riverine lakes



Dune lakes (not visible at this scale)



Volcanic lakes



Wetland